



Field International Workshop on Paleopedology

,Ancient soils, living landscapes'

Palenque, Mexico, 19-26 February 2026





Palenque, archaeological zone

2.1 Urbic TECHNOSOL (Loamic, Calcaric, Humic, Hyperartefactic, Mollic, Skeletic)



Otulum river,
near the archaeological zone

2.2 Eutric CAMBISOL
(Loamic, Bathyfluvic, Bathyglyeyic,
Bathypyric)



Palenque, near the archaeological zone

2.3 Skeletic Cambic PHAEOZEM
(Loamic, Humic)



Palenque, entrance to the archaeological zone

3.1 Calcaric Skeletic Solimovic CAMBISOL
over
Urbic TECHNOSOL (Loamic, Calcaric,
Hyperartefactic, Skeletic, Solimovic?)

locally, travertine crust on soil surface!



Palenque, Hotel Mundo Maya,
vicinity of the archaeological zone

4.1 Chromic LUVISOL (Loamic, Endoarenic,
Cutanic, Ochric, Endoraptic, Solimovic)



Palenque, Hotel Mundo Maya,
vicinity of the archaeological zone

4.2 Cambic Stagnic PHAEOZEM (Loamic,
Solimovic)
over Cambic Greyzemic Stagnic PHAEOZEM
(Clayic, Prototechnic, Protovertic)



gypsum
crystals

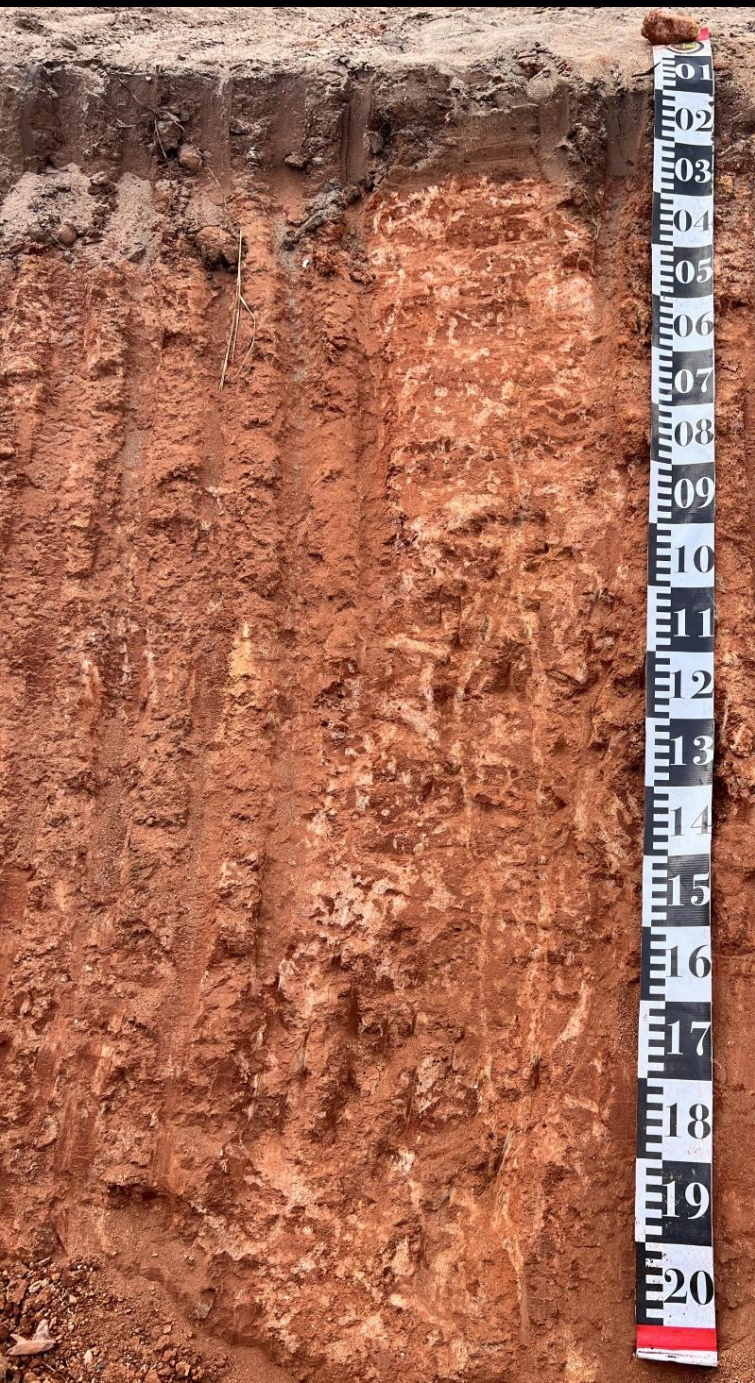
Budsilha, wetlands

5.1 Gypsic Reductigleyic Mollic GLEYSOL
(Clayic, Humic)



Budsilha, limestone hills, karstic pocket

5.2 Calcaric Skeletic Chernic PHAEOZEM
(Clayic, Chromic, Pachic, Bathycambic)



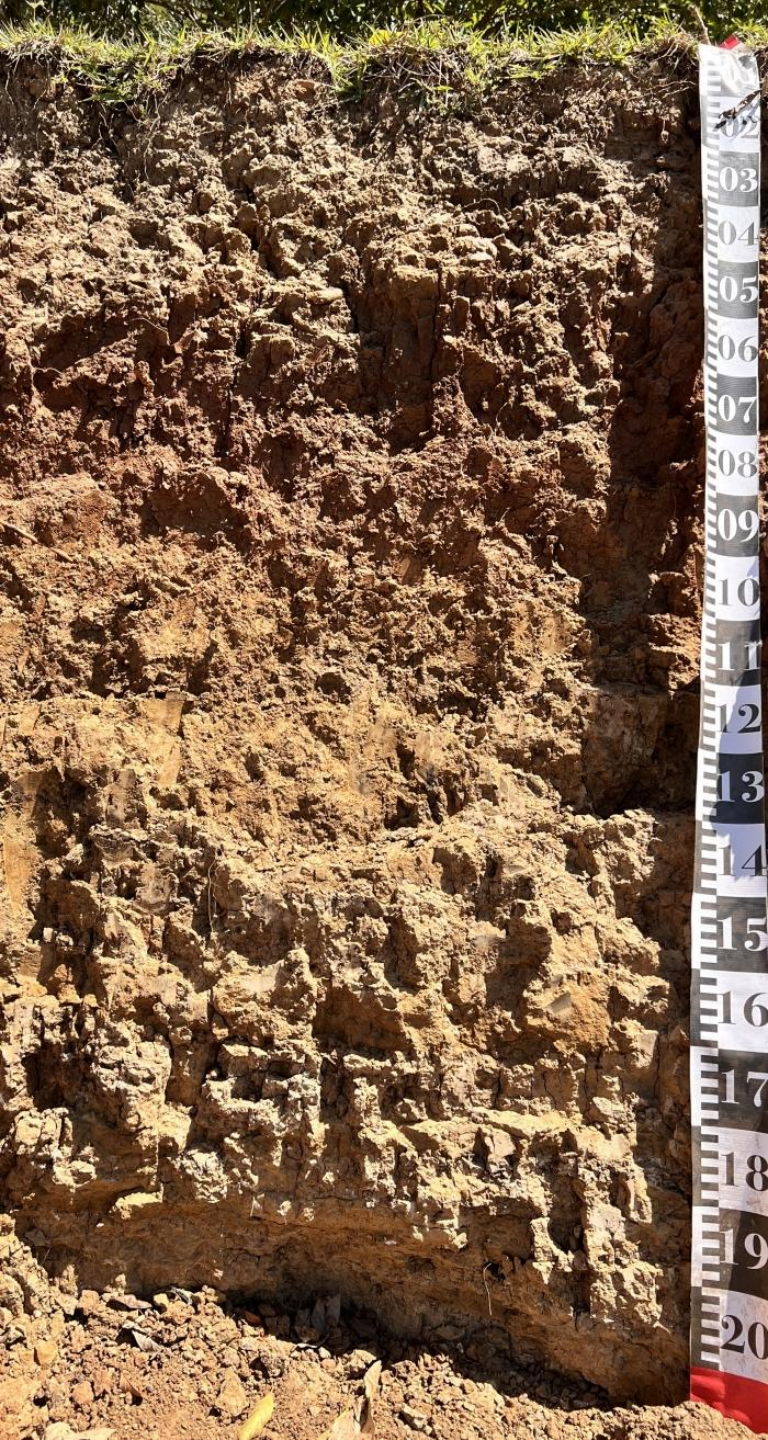
Emiliano Zapata, Usumacinta river,
the highest terrace

6.1 Stagnic Acrisol (Loamic, Cutanic,
Ochric)



Usumacinta river,
intermediate terrace - lower position
(poorly drained)

6.2 Haplic VERTISOL (Drainic, Ochric,
Pelocrustic, Raptic, Gleyic+Stagnic,
Luvic?)



Chacienda Chable, Usumacinta river,
intermediate terrace – higher position
(well drained)

6.4 Chromic Vertic Stagnic LUVISOL
(Epiloamic, Katoclayic, Cutanic,
Hypereutric, Ochric)



Usumacinta river, youngest terrace

6.3 Eutric FLUVISOL (Epiloamic,
Katoarenic, Aric, Ochric)

